

Digital Photography 8/9

Part II: Black & White



Seeing The World as Black & White

- B & W photography involves seeing your compositions in tones of grey – stepping out of our color reality.
- Lighting can create dramatic effects.
- Contrast!!!



Why Enter The World of Black & White?

- Adds drama
- Sharpen otherwise dull pictures.
- heightens depth and emotion
- Timeless, clean & crisp look.
- Offers and artistic flair
- Add a sense of romance to your composition



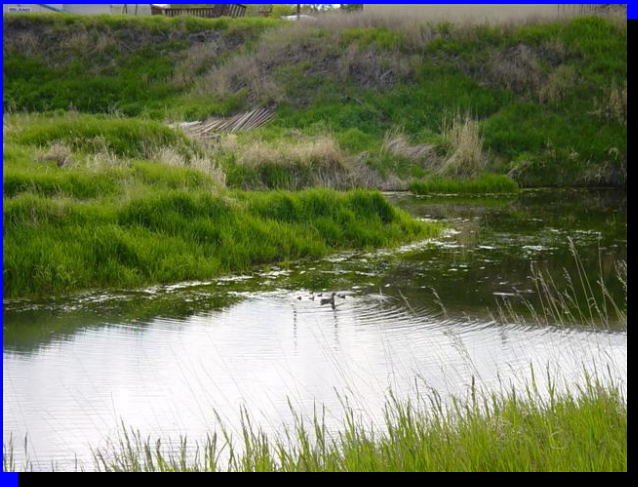
When to Enter The World of Black & White:

- Drab outdoor/landscape type shots.
- Scenes with interesting patterns, shapes & lines.
- Hind flaws (color, tone etc.)
- Architecture
- Highlight intricate detail.



Taking Pictures – 2 Choices

- Setting camera to black & white
- Most photo editors can convert your pictures to ‘grayscale’.



Positive & Negative Space

- Positive shapes typically are your Centre of Interest.
- Negative Space typically is the space between subject matter
- Negative space can create interest/have life on its own.
- Contrast between positive & negatives add depth to the composition.



Black & White Practice

Collect a series of compositions that demonstrate knowledge of the use of:

1. Experimentation with black & white (6) using an editing program.

Each photo must include an explanation of your composition.